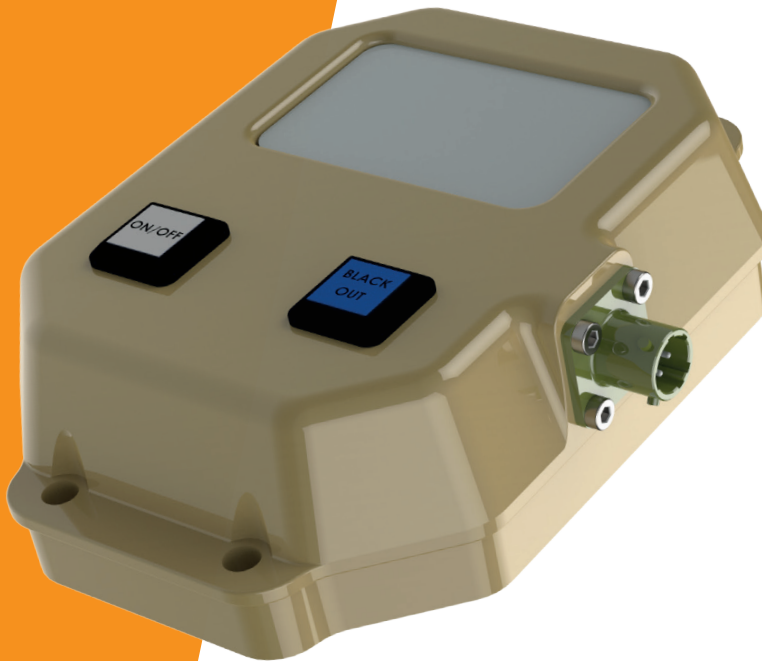


Safe Cabin Light Function Description

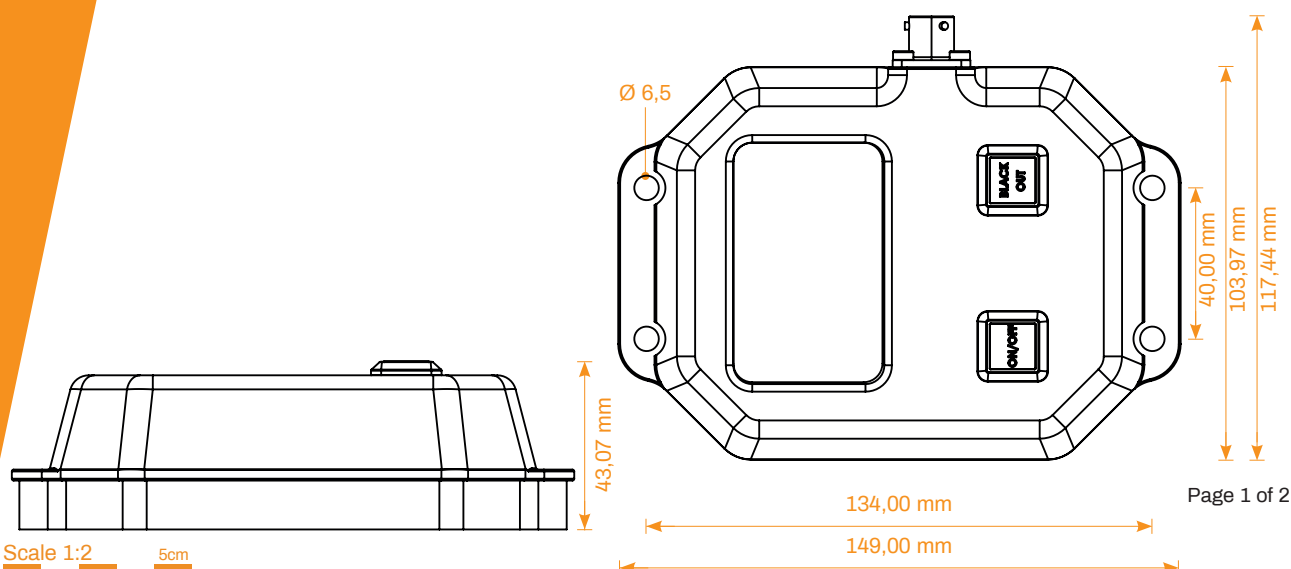


Modes		3
	normal	7.125 K 240 lm
	emergency	blue 25,7 lm
	fail safe	blue >3h duration
Temp. Range		-40 °C to +65 °C
Housing	Aluminium, finish according RAL 1014, DURA mix	
	IP67	
Connector	VG95328C-8-3APN	
	A	24 V
	B	SIG
	C	GND
Voltage	nominal	24 V
	operating	24 – 32 V
Current	operating	max. 480 mA
	charging	max. 570 mA
Battery	runtime	min. 3 h
	lifetime	min. 7 y
Software Version	FIRM0011A02	
Order Number	300284	

The **Raytech** interior light is another highlight of the **Raytech-CAN** electrical system. It is controlled by CAN, but can also be used as a stand alone solution. Its advantage over conventional interior lighting is, that it automatically switches to the emergency mode, when the main battery fails abruptly.

In the emergency mode, the white LEDs are automatically switched off and the blue LEDs are switched on. In normal operation, the interior lighting can be switched on and off by the crew, and the brightness of the LEDs can also be dimmed by pressing the ON / OFF button

As soon as the driver switches to the BlackOut mode, the interior lights automatically switch to the emergency mode. The blue light can also be dimmed by pressing the BlackOut button.



Logical Function

Pin A	Pin B		
0 V	0 V	Light is on, powered by the battery.	
0 V	24 V or open line	Light is on, powered by the battery.	
24 V	0 V	Camouflage Light	Buttons can turn their associated light OFF or ON
24 V	0 V	White Light ON / OFF	Buttons can turn their associated light OFF or ON
0 V*	0 V	Light OFF / Shut Down	
0 V*	24 V or open line	Light OFF / Shut Down	

* after „power down“ sequence

Function Description

Normal

Press shortly the ON/OFF button to activate or deactivate the white normal light. The lamp always switches to the last selected brightness setting.

Dimming up is only possible, when the lamp is off. To dim up the light, press and hold the ON/OFF button until the desired brightness is reached, the lamp will keep this setting.

Dimming down is only possible, when the lamp is on. To dim down, press and hold the ON/OFF button until the desired brightness is reached, the lamp will save this setting and turns off. Press the ON/OFF button shortly to activate the lamp in the previous selected brightness.

By using the ON/OFF button while Camouflage-Mode is activated, Camouflage-Mode turns off and the Normal-Mode activates.

Camouflage

Press shortly the BlackOut button to activate or deactivate the blue camouflage light. The lamp always switches to the last selected brightness setting.

Dimming up is only possible, when the lamp is off. To dim up the light, press and hold the BlackOut button until the desired brightness is reached, the lamp will keep this setting.

Dimming down is only possible, when the lamp is on. To dim down, press and hold the BlackOut button until the desired brightness is reached, the lamp will save this setting and turns off. Press the BlackOut button shortly to activate the lamp in the previous selected brightness.

By using the BlackOut button while Camouflage-Mode is activated, Normal-Mode turns off and the Camouflage-Mode activates.

Failsafe

In the event of power failure, the Camouflage-Mode turns on automatically and runs until the batteries are discharged or the vehicle power is restored. The light switches back to the previous selected mode and brightness, when the power failure is remedied.

The batteries recharge automatically whenever the Safe Cabin Light is connected to the vehicle's electrical system and the ignition is on.